

2024



**WHERE
INTERESTING
PEOPLE
MEET**

GERMAN COURSES @ GLS BERLIN





STAR SCHOOL GERMANY

GLS has received the *Star School Germany* award 5 times and has been declared a SUPER STAR among the world's best language schools by Study Travel Magazine in London: [Read more about GLS](#)

CONTENTS

p. 04	<u>ABOUT GLS</u>
p. 05	<u>STUDENT AGES & NATIONALITIES</u>
p. 06	<u>5* FACILITIES: GLS CAMPUS BERLIN</u>
p. 10	<u>GERMAN COURSES</u>
p. 16	<u>ACTIVITIES</u>
p. 17	<u>ACCOMMODATION</u>
p. 18	<u>FACT SHEET</u>
p. 19	<u>CONTACT</u>



ABOUT

GLS EST. 1983

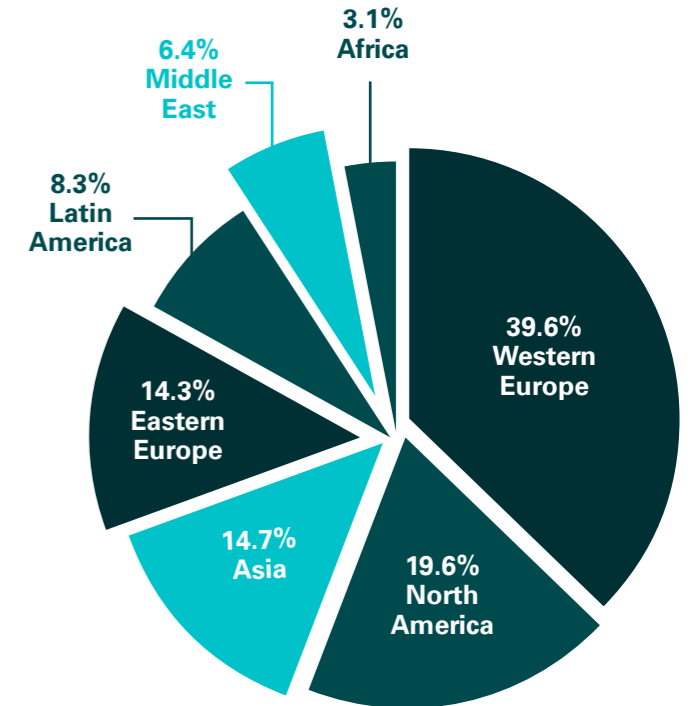
What began as a one woman show in 1983, is now a company with 170 employees and annually more than 5000 students from all over the world. [Learn more](#)



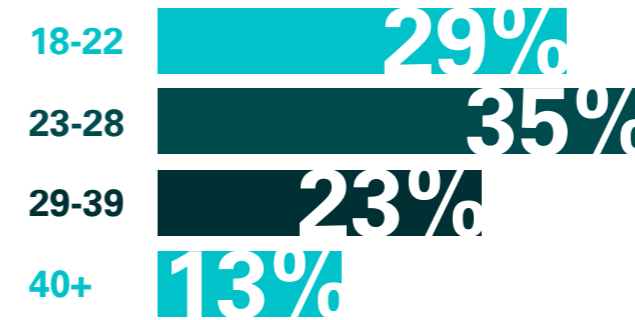
Barbara Jaeschke (center) who founded GLS in 1983, is directing it till today - together with her daughters Dr. Verena Jaeschke (left) and Dr. Reemda Jaeschke (right).

STUDENT AGES & NATIONALITIES

GLS has on average 300 students on campus at a time - in summer even up to 600 - aged from 18 to 80. Company clients include [Rolls Royce](#), [Fendi](#) and [Amnesty International](#).



STUDENT AGES IN 2022



STUDENT NATIONALITIES IN 2022

GLS PORTFOLIO

FOR ADULTS

German courses (Berlin & online)

Internships in Berlin

University Pathway Germany

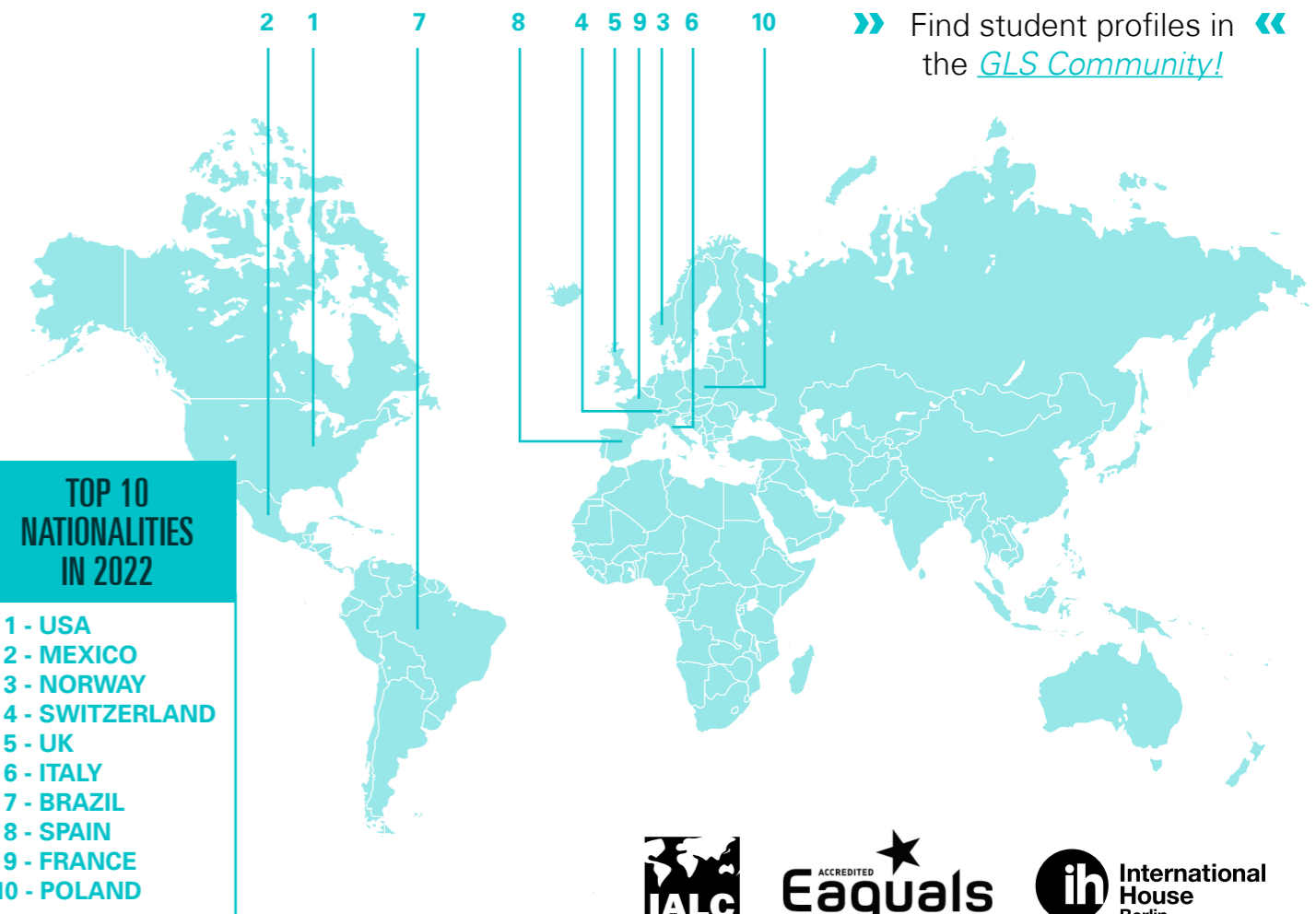
FOR JUNIORS

Summer Camps (Berlin & Munich)

High School stays in Germany

WHY GLS – UNIQUE SELLING POINTS

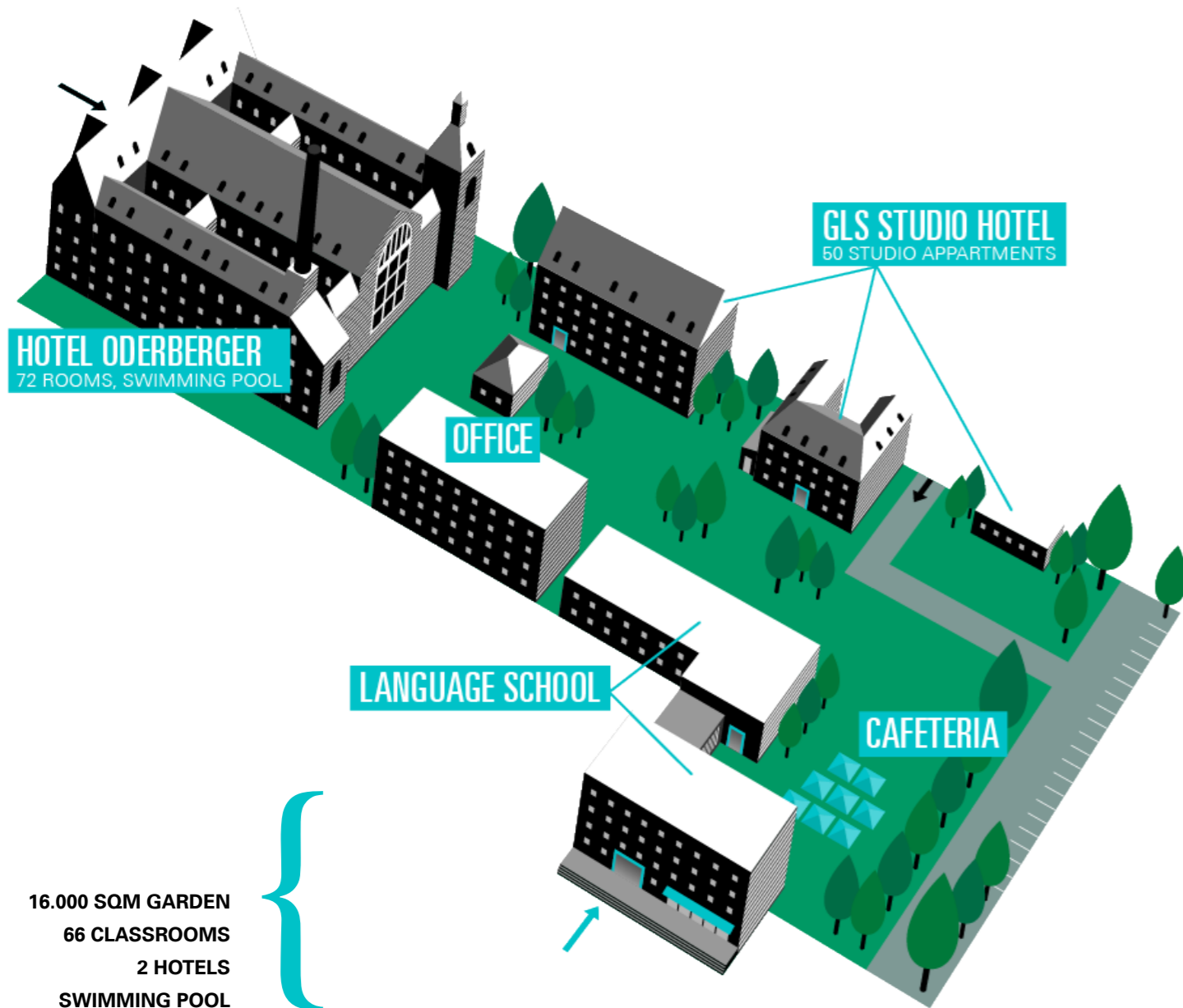
- » The only language school in Germany with a 5* campus
- » Accommodation on site (72 hotel rooms, 50 apartments)
- » Prime *location in the center of Berlin*
- » Cool neighbourhood
- » 5 time winner of the STAR SCHOOL GERMANY award
- » Courses start every Monday
- » Test center for TestDaF and telc German
- » Small groups, fast progress



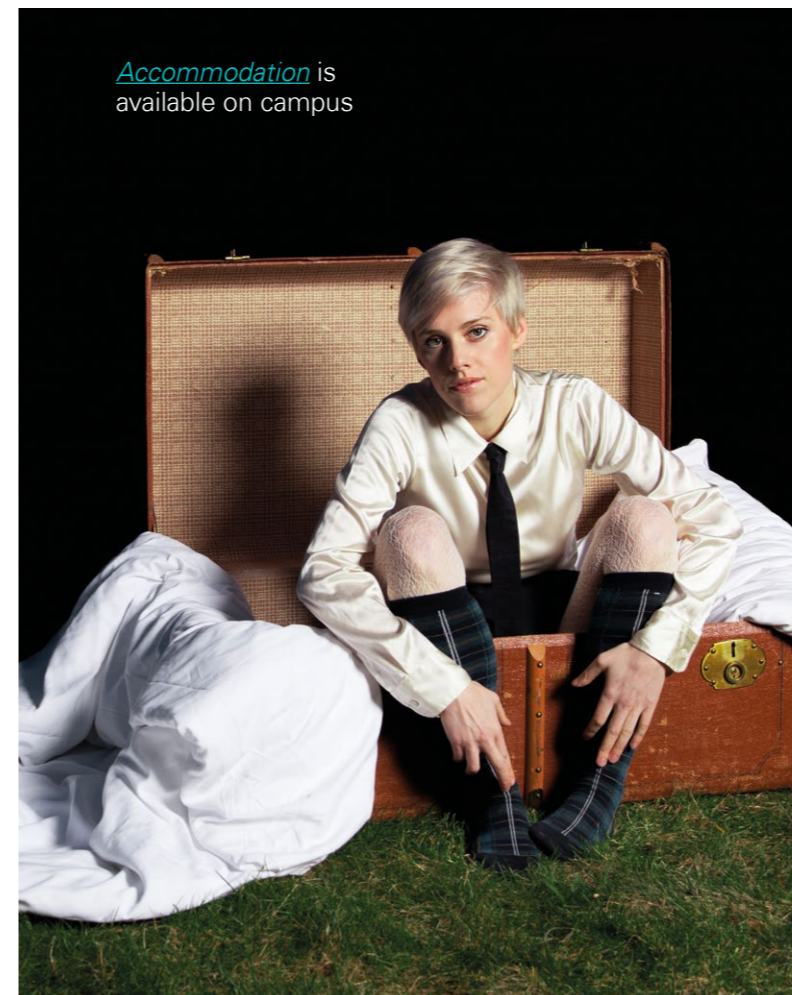
5* FACILITIES

GLS CAMPUS BERLIN

The GLS Campus is a green oasis in the very center of Berlin. It's architecture reflects [Berlin history](#), and the facilities are unique in Germany:



A historical photo of Hotel Oderberger: built in 1902 and a Berlin landmark under monument protection.



[Accommodation](#) is available on campus



The pool on campus, in Hotel Oderberger: reduced swimming rates for students



[visit our campus in video](#)

A historical photo of the main school building: built in 1960 on ruins left by World War II.

“ A green oasis in the very center of Berlin. ”

5* FACILITIES

ACCOMMODATION ON CAMPUS

GLS offers housing both on and *off campus*. There are 2 options on campus: a Studio Hotel with 50 apartments and Hotel Oderberger with 72 rooms.



All 50 apartments in the Studio Hotel are modern, but the ambience is historic: The apartments used to be classrooms of a former school, that was closed shortly after the fall of the Berlin Wall in 1989.

THE STUDIO HOTEL

- 50 APARTMENTS
- KITCHEN, BATHROOM, WIFI
- BOOKABLE SINGLE
- DOUBLE
- SHARED DOUBLE

[read more](#)

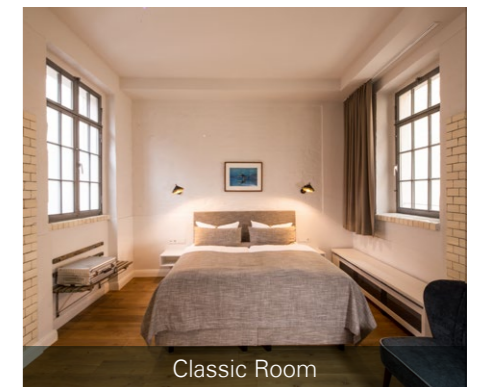


The Oderberger was built in 1902 as a public bath house. In 1986, it was closed and fell into disrepair. GLS bought and renovated it, re-opening it as a hotel in 2016.

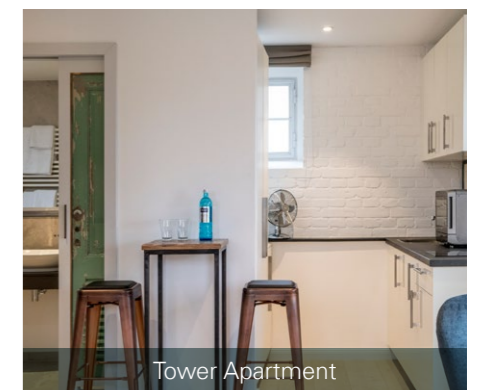
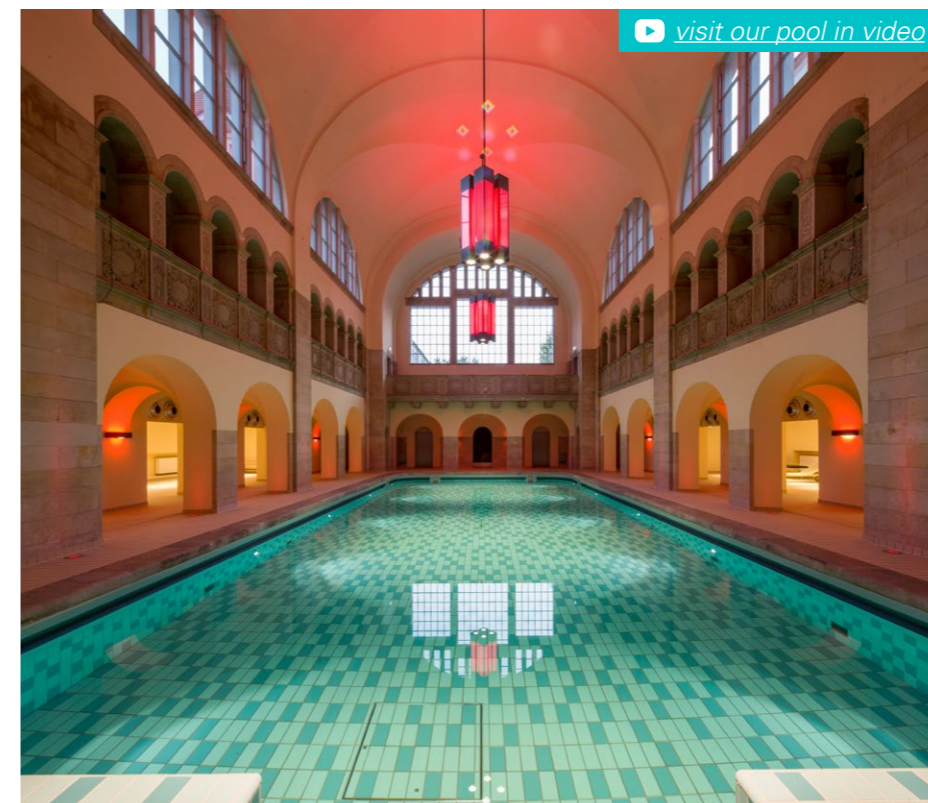
BOUTIQUE HOTEL ODERBERGER

- 72 HOTEL ROOMS
- HISTORIC SWIMMING POOL
- 3 ROOM CATEGORIES
- CLASSIC ROOMS
- TOWER APARTMENTS
- ROOFTOP MAISONNETTES

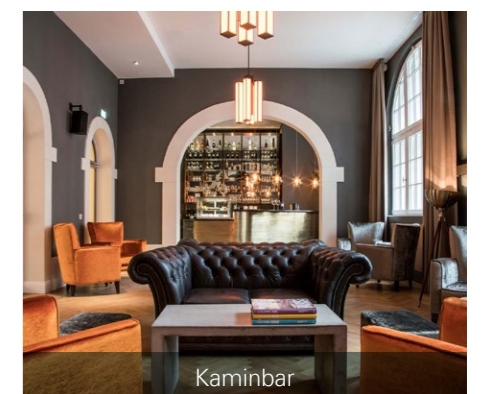
[read more](#)



Classic Room



Tower Apartment



Kaminbar



ACADEMIC DIRECTOR
Marion Feuchtenberger-Lenzen
 +49 30 780089 - 20
 marion.feuchtenberger@glS-berlin.de

GERMAN COURSES

Courses start every Monday and are complemented by after-class activities in Berlin. GLS is a test center for both TestDaF and telc German.

COURSE TYPES

- » [General German](#)
- » [Business German](#)
- » [Exam prep for TestDaF, telc German, Goethe](#)

EXTRAS

- » [German course + internship in Berlin](#)
- » [University Pathway Germany](#)

SAMPLE WEEK MON-FRI

09.00	Two lessons of 45min
10.30	Break
11.00	Two lessons of 45min
12.30	Break
13.15	Two lessons of 45min
14.45	Break
15.00	Activity program

TEACHERS

All teachers have university degrees. They are not only experienced teachers, but also interesting people to talk to: [see some profiles](#)

LEVELS

We teach at all levels ranging from beginners to advanced. How long does it take to learn German? [Check this table](#)

PRICES

[See dates & prices](#)

GENERAL GERMAN

Courses start every Monday. Minimum duration: 1 week. One lesson has 45 minutes. [See detailed course descriptions](#)

COURSES

	Lessons/week	Course time	Group size
Intensive	20	9.00-12.30	8-14
Super Intensive	30	9.00-14.45	8-14 (AM) & 5-8 (PM)
Crash	30	9.00-14.45	8-14 (AM) & 1 (PM)
One-to-one	10 or more	Flexible	One
Private mini-group*	10 or more	Flexible	2-6

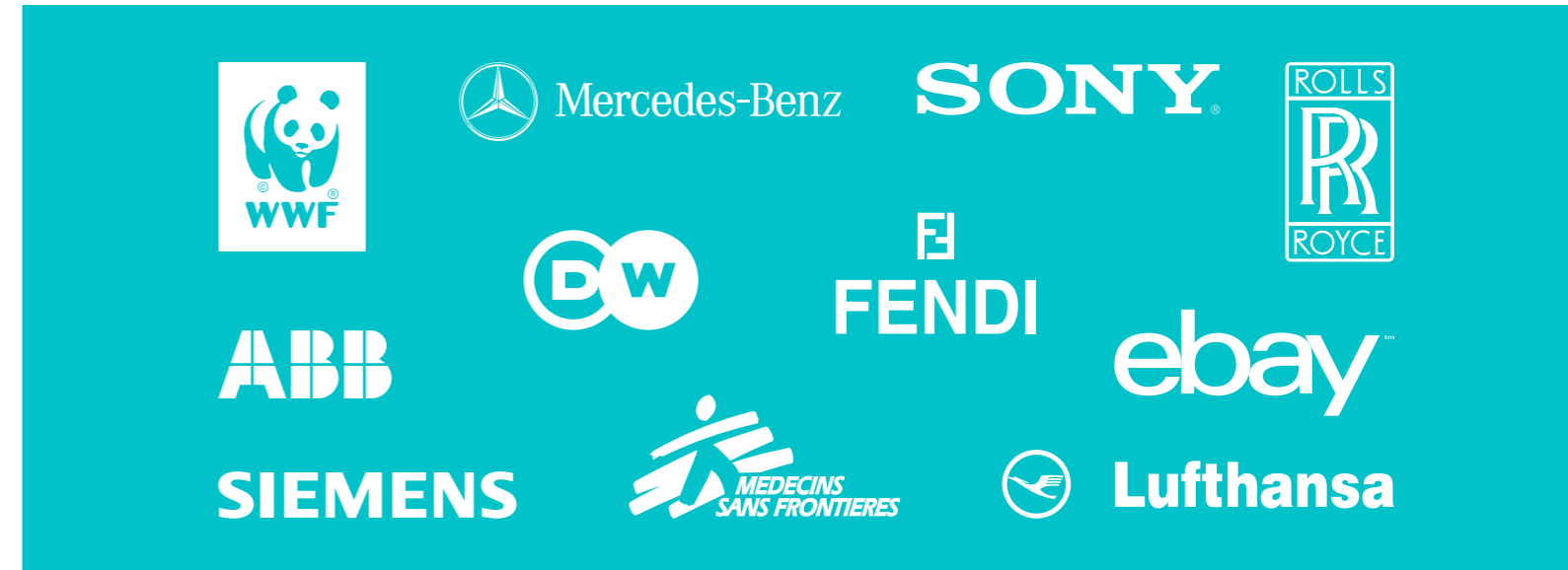
*a group you put together to split costs

PRICES

[Dates & prices](#)

BUSINESS GERMAN

The GLS campus offers a true business class environment for professionals – with 5* facilities and [on-site accommodation](#). GLS business clients include:



COURSES

All courses train the language skills needed in any professional situation, but they also impart knowledge of German business culture and etiquette. [See detailed course descriptions](#)

GERMAN FOR

- doctors
- journalists
- lawyers
- teachers

PRICES

[Dates & prices](#)

	Lessons/week	Course time	Group size
Crash (start every Mon)	30	9.00-14.45	8-14 (AM) & 1 (PM)
One-to-one	10 or more	Flexible	One
Private mini-group*	10 or more	Flexible	2-6

*a group you put together to split costs

★ Extra: Internships in Berlin

For GLS students who want to apply what they have learned: GLS can arrange internships in Berlin, in several professional fields (unpaid, 6-12 weeks long): [read more](#)

TESTDAF, TELC AND GOETHE EXAMS

GLS offers preparation courses for the most important German language certificates and is an official test center for TestDaF and telc German. [See course dates, exam dates and prices](#)

CHOOSE YOUR EXAM

TELC B1 accepted by many employers

TELC B2 accepted by almost all employers

TESTDAF/TELC C1 for university studies in Germany

GOETHE C2 for non-native speakers teaching German

PREP COURSES

	Lessons/week	Course time	Group size	Duration
Intensive	8	13.15-14.45	Max 8	4 weeks
Super Intensive	34	09.00-14.45	8-14	4 weeks
One-to-one	10 or more	Flexible	One	Flexible
Private mini-group*	10 or more	Flexible	2-6	Flexible

*a group you put together to split costs

PRICES

[Dates & prices](#)

UNIVERSITY PATHWAY GERMANY

GLS supports applications for BA and MA programs at nearly 800 German universities in all areas. Our program guides applicants through every step of the way and includes a German course lasting from 2 to 12 months.



GLS APPLICATION SERVICE

- » free checking of a student's documents prior to arrival to determine eligibility
 - » free roadmap to university, customized to a student's academic background
 - » visa support
 - » mock interview for visa application
 - » individual consultation
- [See detailed information & prices](#)



EXAM COORDINATOR
Sebastian Nothhelfer
 +49 30 780089-88
 exam@glS-berlin.de



UNIVERSITY PATHWAY COORDINATOR
Anika Germanus
 +49 30 780089-13
 anika.germanus@glS-berlin.de

AFTER CLASS

ACTIVITIES

Every week GLS organizes a minimum of three after-class activities in Berlin and one weekend trip to places like Potsdam, Leipzig or Dresden.

» You can find this week's « program [here](#)

SAMPLE WEEK	
SUN	ARRIVAL IN BERLIN transfer to accommodation
MON	WEEKLY REGULARS' TABLE for all old and new students
TUE	FREE SEMINAR about German film, music, history
WED	GALLERY VISIT e.g. « Berlinische Galerie » near GLS
THU	BOAT TRIP around Museum Island
FRI	CITY WALK with GLS guides in Berlin Kreuzberg
SAT	FULL DAY EXCURSION with a GLS guide: e.g. to Potsdam
SUN	FREE DAY for individual activities: e.g. trip to a lake

ACCOMMODATION

OFF CAMPUS

In addition to [on-campus housing](#), GLS also offers housing in various districts of Berlin – in homestays and student residences.



HOMESTAYS

- » Distance to GLS: 10 – 50 minutes.
- » Single room in a flat shared with Berliners.
- » Bookable with breakfast or half board or no meals [read more](#)

STUDENT RESIDENCES

- » Distance to GLS: 10 – 30 minutes.
- » Single studios with kitchen, bath & highspeed WiFi: [read more](#)

FACT SHEET

ABOUT

Founded 1983, member of IALC and EAQUALS. [GLS](#) is the IH International House School in Berlin.

FACILITIES

- » [Own campus](#)
- » fantastic location
- » 66 class rooms
- » 50 apartments
- » 72 hotel rooms
- » cafeteria
- » swimming pool

COURSES FOR ADULTS

- » [General German](#)
- » [Business German](#)
- » [TestDaF, telc, Goethe](#)

EXTRAS

- » [Internship](#)
- » [University Pathway](#)

AFTER-CLASS ACTIVITIES

3 half-day and 1 full-day [activity](#) per week

ACCOMMODATION

- » [On-campus](#): 50 apartments & 72 hotel rooms
- » [Off-campus](#): student residences & homestays

CONTACT

Aline Borquez leads the sales team. See photos and phone numbers of your [contact persons](#)

- » +49 30 780089-12
- » german@gls-berlin.de

How to enroll?

[Click here to calculate prices and register](#) for a program

Find us on

